

GEMTEC Consulting Engineers & Scientists Limited - 191 Dowd Road, Fredericton, NB (506) 453-1025



**Estimated Damages – Fully Flooded Basement**

	Existing Condition		Scenario #5	
	Property Count	Damage in Dollars	Property Count	Damage in Dollars
Non-Residential	84	\$84,835	19	\$19,189
Residential	381	\$27,706,028	95	\$6,908,327
<b>Total Damage</b>	<b>465</b>	<b>\$27,790,864</b>	<b>114</b>	<b>\$6,927,516</b>
Mitigated Damage	-	-	351	\$20,863,347

**Estimated Damages – 0.9m (3ft) above ground level**

	Existing Condition		Scenario #5	
	Property Count	Damage in Dollars	Property Count	Damage in Dollars
Non-Residential	84	\$33,886,455	19	\$7,664,793
Residential	381	\$85,186,327	95	\$21,240,685
<b>Total Damage</b>	<b>465</b>	<b>\$119,072,782</b>	<b>114</b>	<b>\$28,905,479</b>
Mitigated Damage	-	-	351	\$90,167,303

NUMBER	ISSUE	DATE
		(YYYYMMDD)

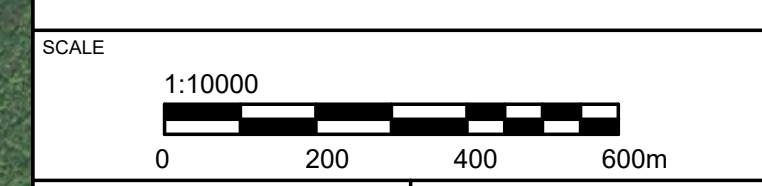
ENGINEER'S STAMP

DRAWN BY	TLR	CHECKED BY	NA
CALCULATIONS BY	NA	CHECKED BY	HA

PROJECT

**TOWN OF SUSSEX REGIONAL FLOOD RISK MITIGATION**

DRAWING  
**CONSTRUCTION OF DIVERSION CHANNELS ON TROUT CREEK AND PARSONS BROOK AND LIMITING THE INFLOWS RESPECTIVELY TO 60 CMS AND 30 CMS (SCENARIO #2) WITH THE ADDITION OF LOW-COST FLOW CONTROL MEASURES.**



FILE NO.	SHEET NO.
0857.12	D6

# SCENARIO #5

