

GEMTEC Consulting Engineers & Scientists Limited - 191 Dove Road, Fredericton, NB (506) 453-1025



| Estimated Damages – Fully Flooded Basement | | | | |
|--|--------------------|---------------------|----------------|---------------------|
| | Existing Condition | | Scenario #1 | |
| | Property Count | Damage in Dollars | Property Count | Damage in Dollars |
| Non-Residential | 84 | \$84,835 | 31 | \$31,308 |
| Residential | 381 | \$27,706,028 | 169 | \$12,289,551 |
| Total Damage | 465 | \$27,790,864 | 200 | \$12,320,859 |
| Mitigated Damage | - | - | 265 | \$15,470,005 |

| Estimated Damages – 0.9m (3ft) above ground level | | | | |
|---|--------------------|----------------------|----------------|---------------------|
| | Existing Condition | | Scenario #1 | |
| | Property Count | Damage in Dollars | Property Count | Damage in Dollars |
| Non-Residential | 84 | \$33,886,455 | 31 | \$12,505,715 |
| Residential | 381 | \$85,186,327 | 169 | \$37,786,061 |
| Total Damage | 465 | \$119,072,782 | 200 | \$50,291,777 |
| Mitigated Damage | - | - | 265 | \$68,781,005 |

| | | |
|--------|-------|------------|
| NUMBER | ISSUE | DATE |
| | | (YYYYMMDD) |

ENGINEER'S STAMP

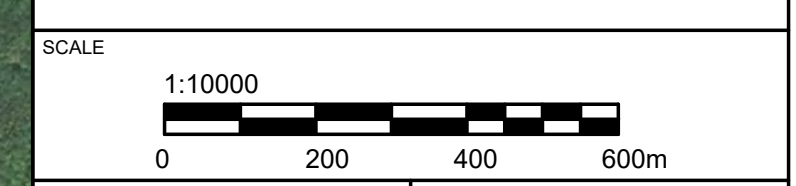
| | | | |
|-----------------|-----|------------|----|
| DRAWN BY | TLR | CHECKED BY | NA |
| CALCULATIONS BY | NA | CHECKED BY | HA |

PROJECT

TOWN OF SUSSEX REGIONAL FLOOD RISK MITIGATION

DRAWING

CONSTRUCTION OF A DIVERSION CHANNEL ON TROUT CREEK AND LIMITING THE FLOW TO 10 CMS, NO FLOW LIMITS OR DIVERSION CHANNELS ON PARSONS BROOK.



| | |
|----------|-----------|
| FILE NO. | SHEET NO. |
| 0857.12 | D2 |

SCENARIO #1

